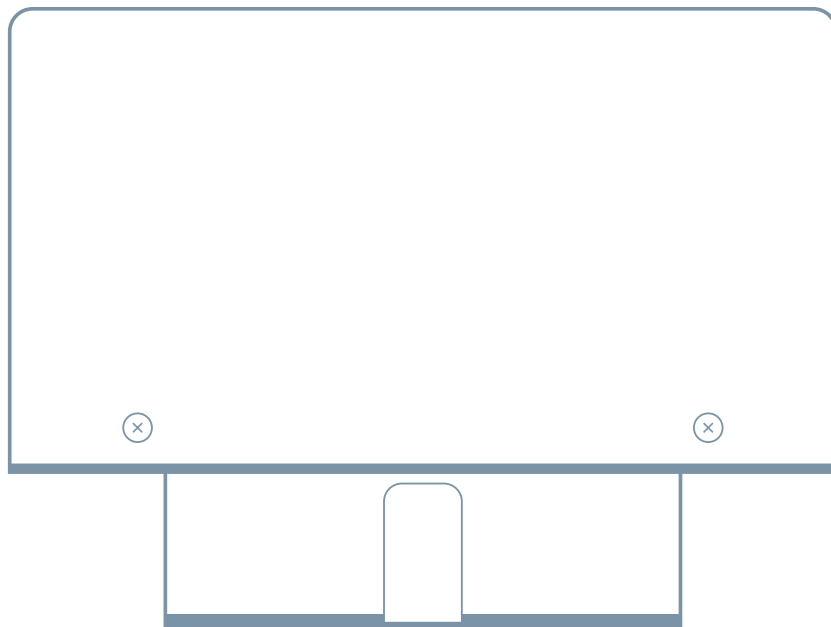


PIPEMINDER ONE

DEPLOYMENT GUIDE

(HYDRANT SENSOR VERSION)



DEPLOYMENT REQUIREMENTS

- **Hydrant Connection**

Before installation **flush the hydrant** and ensure that it is not leaking when pressurized. **Shut off the hydrant prior to device connection.**

- **Freezing Temperatures**

Avoid installing the device on hydrants in locations where the water in the hydrant may freeze, as **expansion of freezing water can damage the pressure sensor.**

- **Cellular Signal**

It is recommended to use a cellular signal tester to survey potential site locations prior to deployment. See the **cellular signal guide** for help troubleshooting signal issues.

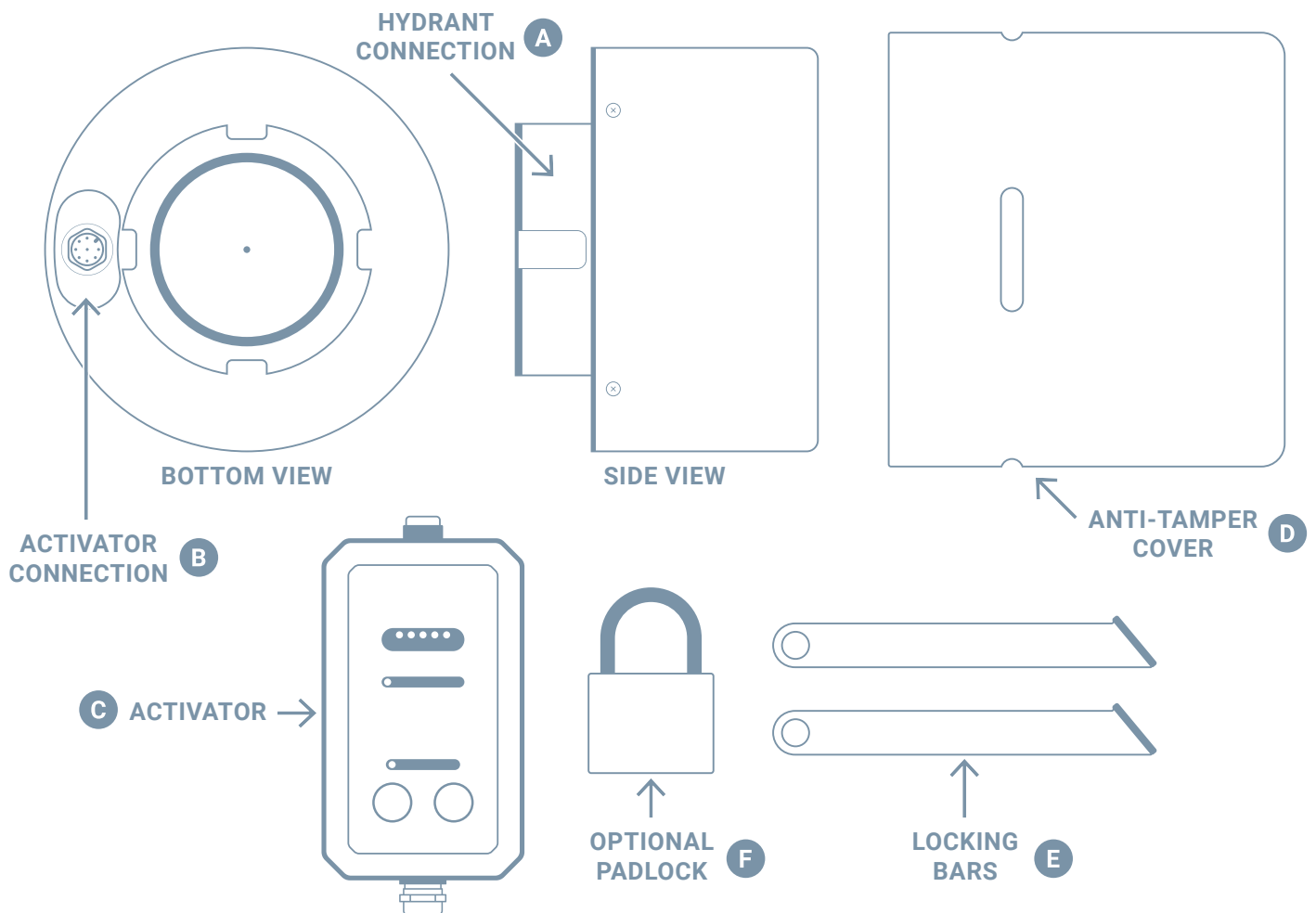
- **Safe Usage**

Please read all safety measures and instructions listed in the product manual.

Use only electrical attachments and accessories supplied by Syrinix.

Do not place devices, accessories or batteries on or near a heat source.

Apply care handling devices / batteries - if dropped or damaged please contact Syrinix.



DEPLOYMENT INSTRUCTIONS

- 1. Connect the Activator C to the activator port on the underside of the unit B**
*Upon connection the right most "Battery Level" LED should illuminate, and all other LEDs should be off – if not, press the **red OFF** button.*
- 2. Perform a battery test to ensure the unit has a full charge before deployment**
Press and hold** the yellow button on the top of the activator - the number of "Battery Level" LEDs that illuminate indicate the amount of charge remaining, if less than 2 lights illuminate the **battery is depleted and should be recharged before use.
- 3. Power on the unit by pressing the green ON button**
*The "Device Powered" LED should **illuminate red.***
- 4. The "Deployment Status" LED will flash orange until the device has a GPS lock**
*This could take up to **5 minutes.***
- 5. Once ready the "Deployment Status" LED will turn either a solid or flashing green color, indicating a network connection has been established**
*For the next 15 minutes, the status LED will display **green** when connected to the cellular network, or **orange** if the network connection is lost. This feedback can help you to confirm a reliable cellular connection. For enhanced deployment and signal data view the device status on **RADAR.***
*If **red LED flashes** are observed this may infer potential hardware / network faults.*
- 6. Once a reliable cellular connection is established, disconnect the Activator**
*Remember to protect the activator port on the unit **with the plastic cover.***
- 7. Fit the 2.5" hydrant connection to the hydrant port using a hydrant tool A**
Before fitting remember to ensure that the hydrant is flushed and shut off.
- 8. Where possible, carefully bleed air from the hydrant**
Take care to bleed air at a low flow rate as the transition from air to water can cause a large, localised pressure transient and damage the pressure sensor.
- 9. Pressurize the hydrant and inspect the connection**
- 10. Where required, install the anti-tamper cover by slotting the locking bars through the slots in the cover and securing with a padlock D E**

DEPLOYMENT LED STATUS

Flashing Orange

Device is starting up

Flashing/Solid Green

Device is **running and connected** to cellular network

Solid Orange


Device is running but cellular network **connection has been lost**

Flashing Red

Something is **wrong** with the device or network

REMOVAL INSTRUCTIONS

When removing a device, the Activator **must always** be used to turn the device **OFF**. Failure to do so for long periods of time can cause permanent damage to the batteries.

1. **Remove the anti-tamper cover and locking bars if installed**
2. **Depressurize and shut off the hydrant**
3. **Remove the device using a hydrant tool**
4. **Connect the Activator  to the activator port on the underside of the unit**
5. **Press the *red OFF* button to power down the device**
6. **Disconnect the Activator and re-fit the plastic cover to protect the activator port**

BATTERY CHARGING

Use only the Syrinix supplied charger - use of any other charger may compromise the safety of the unit and invalidate the warranty.

Devices **should be turned OFF** using the Activator prior to charging. It may not be possible to turn off units with overly depleted batteries - in this case the charge procedure should be followed, and after 1 hour of charge the Activator should then be used to turn devices OFF before then re-starting the charge process.

Place the device on a **clean, dry surface**, facing top-down such that the pressure cavity is pointing upwards. The charger should be placed in a well-ventilated area adjacent to the device and connected to a source of mains electrical power.

1. **Ensure the charger is *not* plugged into the mains power**
2. **If connected, disconnect the Activator, and remove the protective plastic cover from the activator port on the device**
3. **Connect the charger cable to the activator port on the device**
4. **Plug the charger into a mains power outlet**
*The LED light on the charger will turn **red***
5. **Leave the battery to fully charge - this may take up to 4 hours but can be left for longer without harm**
*Once fully charged the LED light will turn **green***
6. **Unplug the charger from the mains power and disconnect from the device**
Ensure that you replace the protective plastic cover on the activator port