

Am Jägersberg 5-7
2161 Altenholz
Germany

phone: + 49 - 4 31 - 3 69 60 - 0
fax: + 49 - 4 31 - 3 69 60 21
mail: info@hydrobios.de /
sales@hydrobios.de
web: www.hydrobios.de



ICES INCUBATOR

CATALOGUE NO. 450 000

MOUNTING INSTRUCTIONS

Edition 02/2017

© Copyright 2017, by: **HYDRO-BIOS** Apparatebau GmbH

All rights reserved. Reproduction in every form – even by way of abstracts – with explicit permission by **HYDRO-BIOS** Apparatebau GmbH only.

SCOPE OF DELIVERY

- 1 Base plate
- 1 Centrifugal pump
- 8 Fixing screws
- 1 Hexagon socket screw key 3 mm
- 1 Illumination frame with 10 fluorescent tubes type PHILIPS TL8W/33 or OSRAM L8W/20
- 1 Rectangular perspex tank with diaphragm valve and hose nozzles
- 2 PVC tubings 415 mm long
- 2 Silicone stoppers
- 1 Turning wheel
- 1 Set of 12 experimental bottles with optical coating

SAFETY INSTRUCTIONS

The **ICES INCUBATOR** is an appliance for indoor use only.

Pull out power supply of illumination frame and centrifugal pump when:

- working in water
- filling the tank
- exhausting the tank
- inserting the turning wheel into the tank
- removing the turning wheel out of the tank
- replacing fluorescent tubes.

If an electric cable is damaged, the appliance must no longer be used.

If the illumination frame has been flooded, it must no longer be used.

MOUNTING INSTRUCTIONS

1. Dismount the grey suction grille of the centrifugal pump (Fig. 1).
2. Slide the centrifugal pump onto the fixing plate, mounted to the base plate (Fig. 2).
3. Remount the grey suction grille (Fig. 3).
4. Place the perspex tank on the base plate and fix it with 4 fixing screws (Fig. 4).
5. Establish the tubing connection between centrifugal pump and perspex tank by means of the PVC tubings (Fig. 5).
6. The hose nozzles for connecting a tempering device can be sealed by means of the silicone stoppers if not used (Fig. 6).
7. Charge the perspex tank with tap water. Highest water level inside the tank: 32.5 cm.
8. Insert the turning wheel equipped with the experimental bottles into the perspex tank (Fig. 7).
9. Put the cover plate onto the perspex tank (Fig. 8).
10. Slide the illumination frame underneath two fixing screws (Fig. 9).
11. Fix the illumination frame with two additional fixing screws (Fig. 10).
12. Connect the illumination frame to mains supply by means of the mains plug. Each fluorescent tube can be switched on separately with a rocker switch.
13. Connect the centrifugal pump to mains supply by means of its mains plug. The diaphragm valve enables the user to adjust the pumping capacity and thereby the rotating speed of the turning wheel.
14. For service and maintenance instructions for centrifugal pump and fluorescent lamps see separate manuals.



Fig. 1

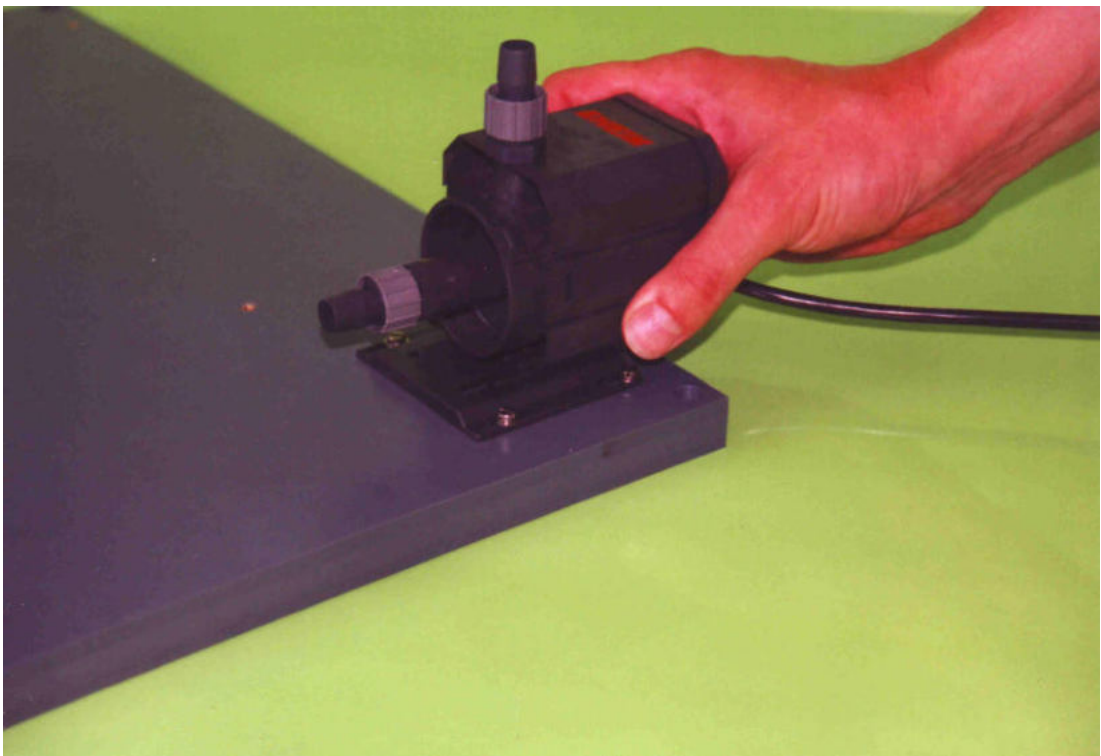


Fig. 2

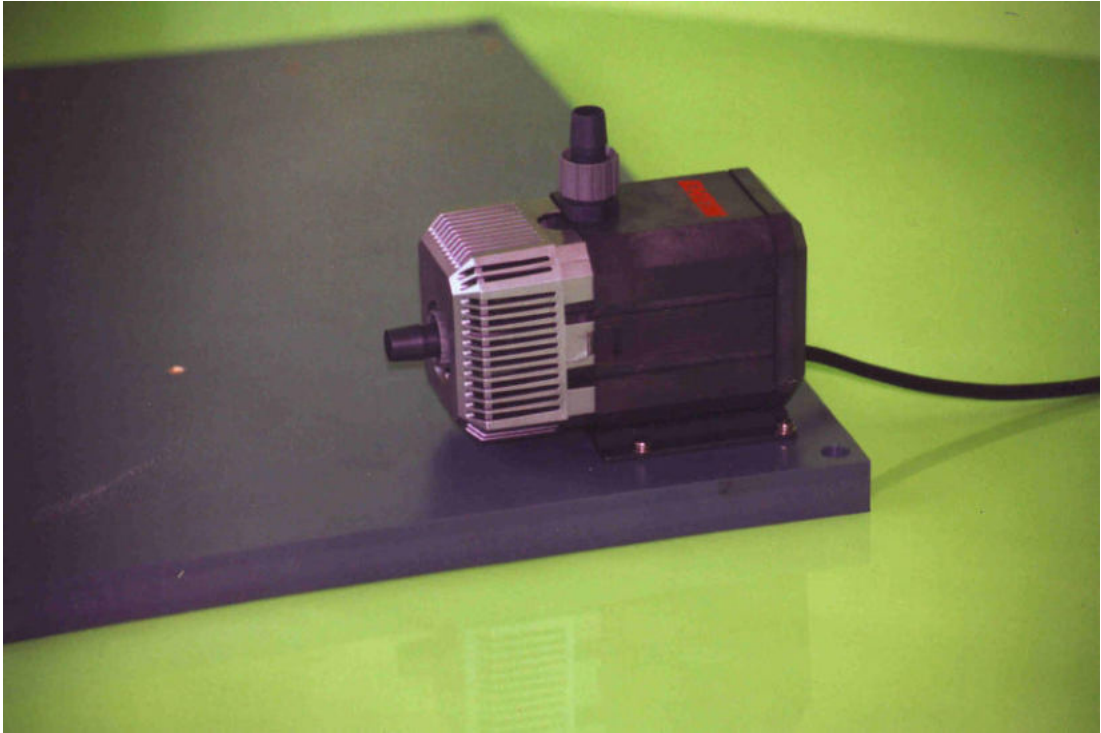


Fig. 3

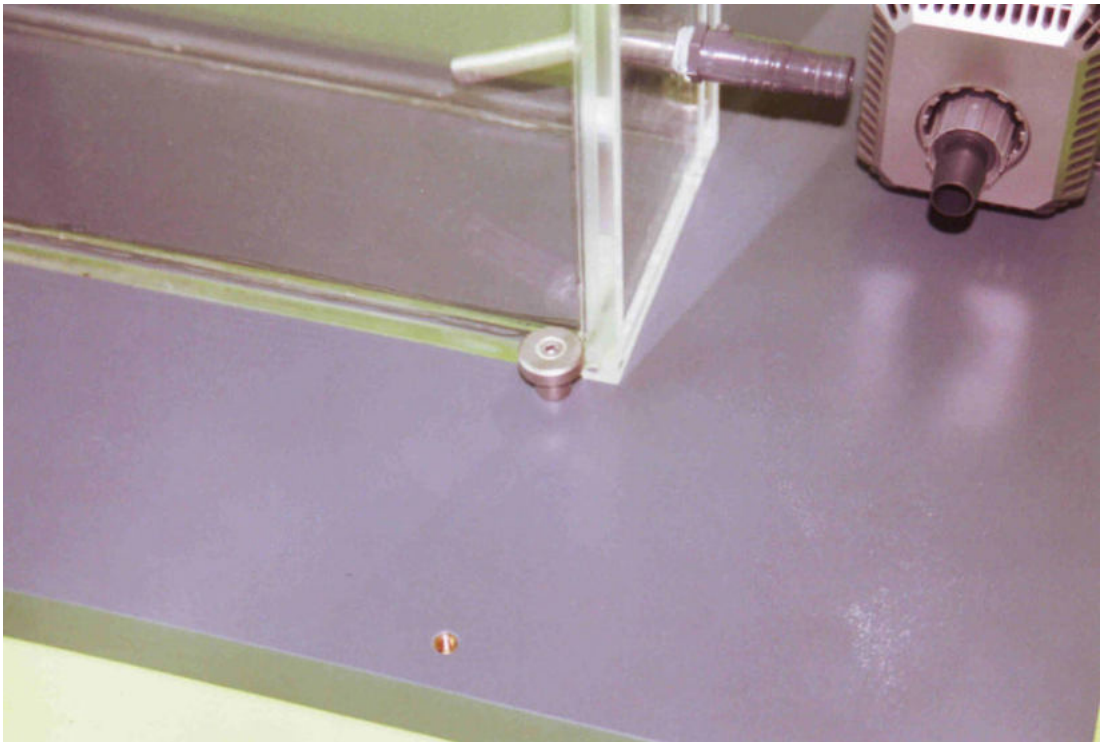


Fig. 4

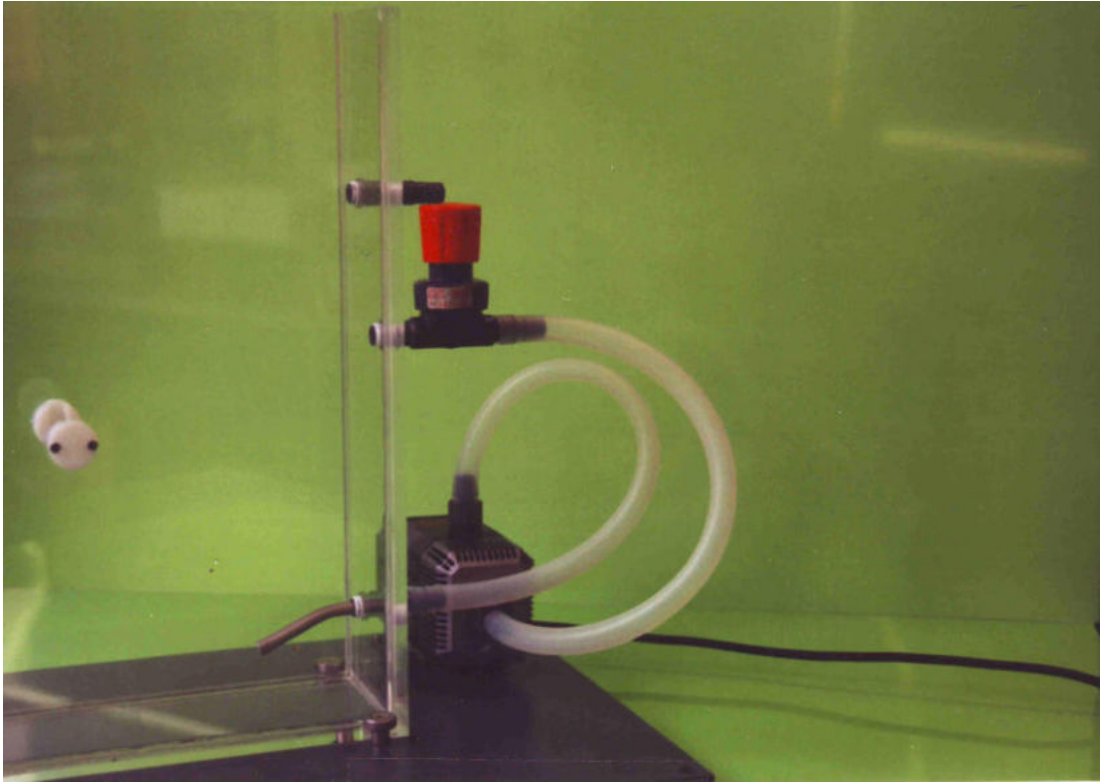


Fig. 5

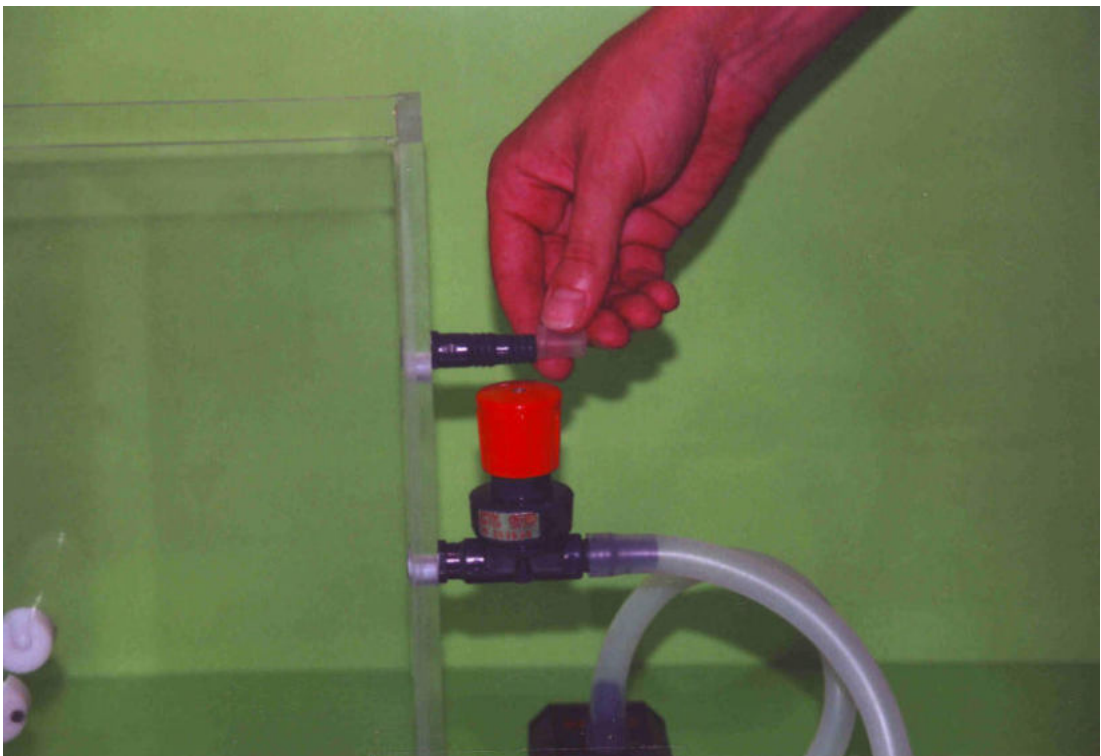


Fig. 6

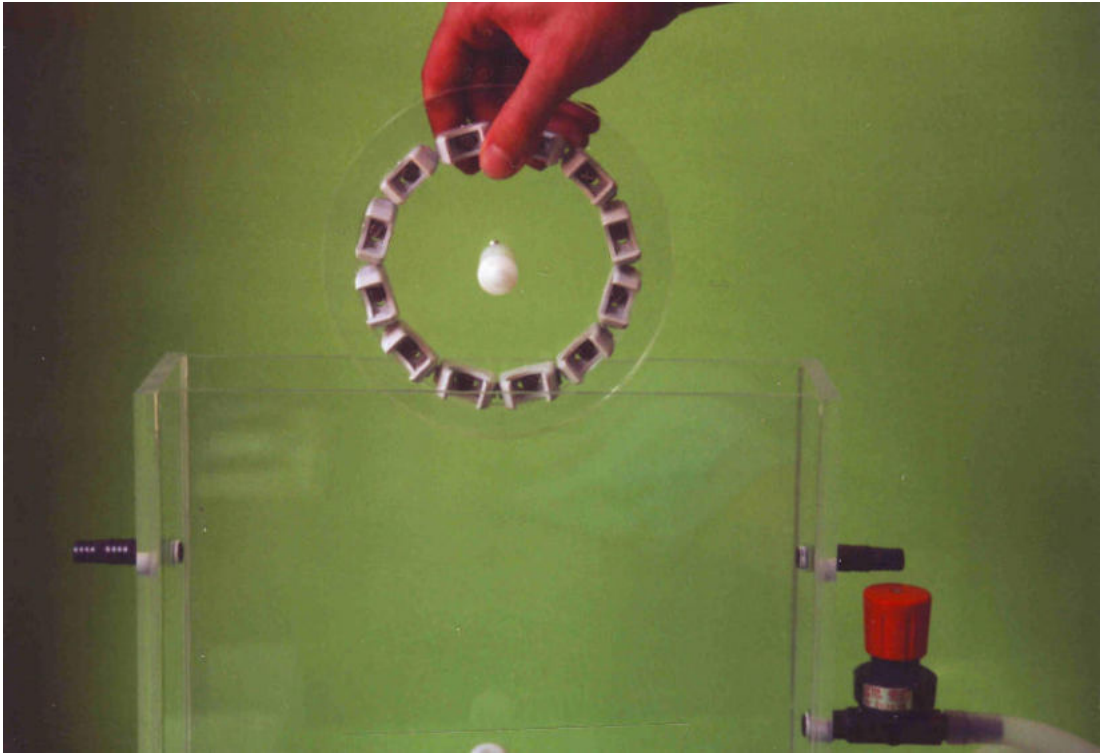


Fig. 7

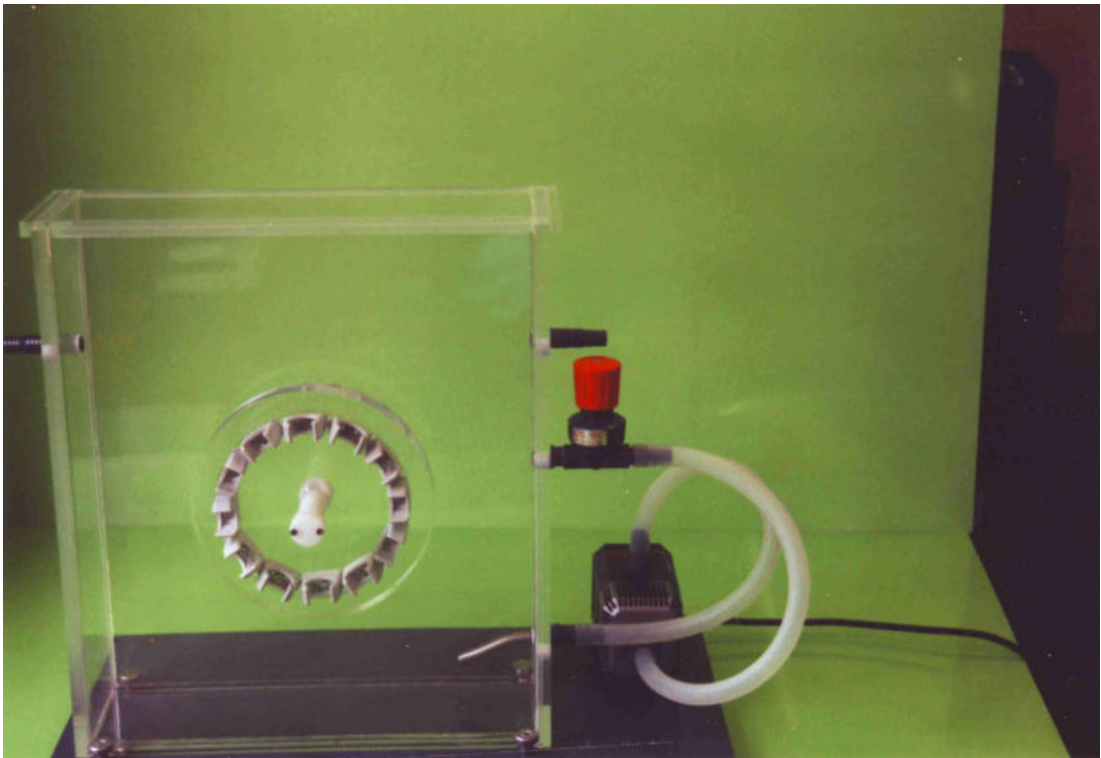


Fig. 8

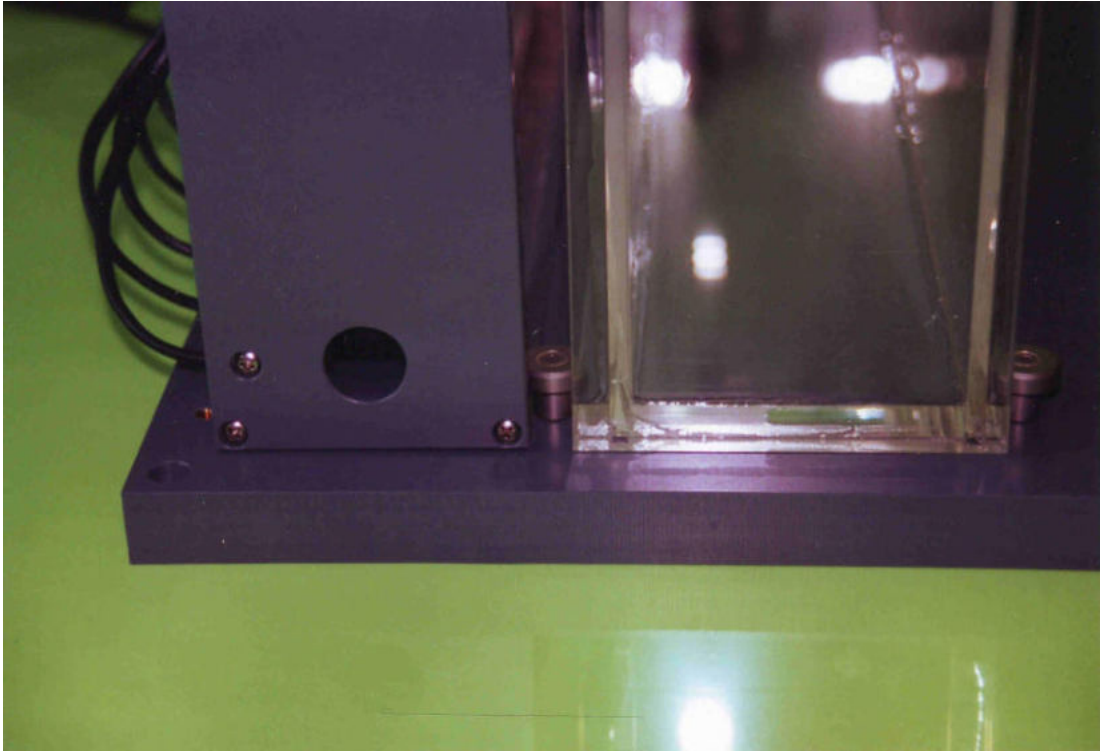


Fig. 9

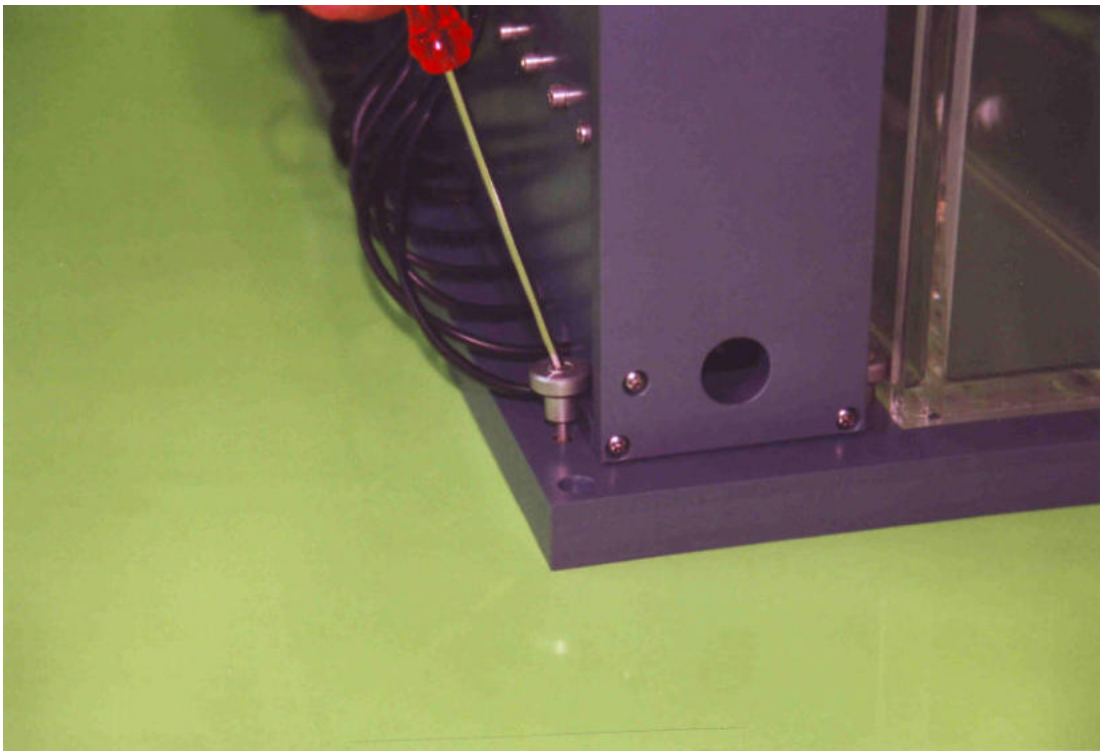


Fig. 10