

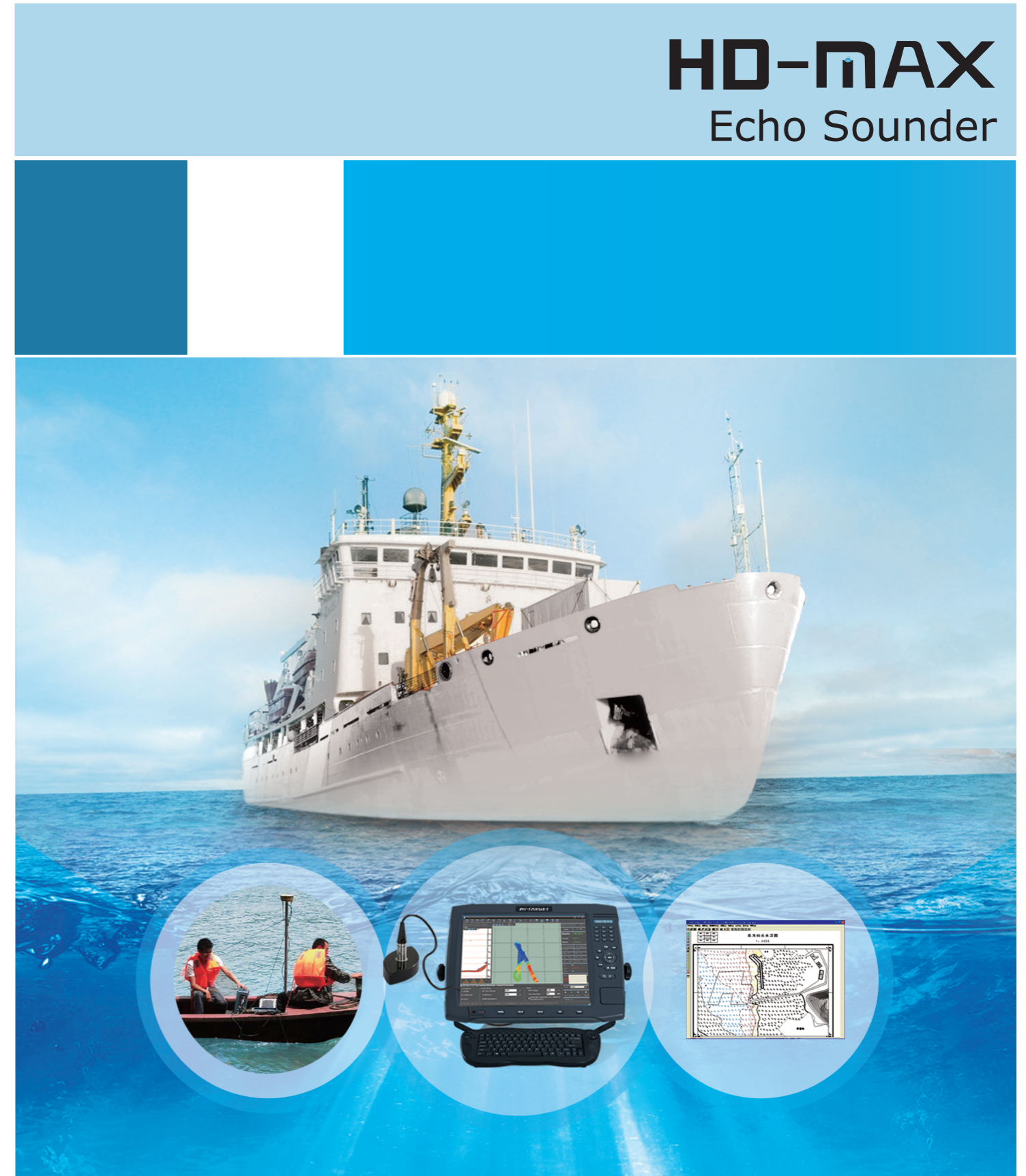
## Hardware Parameters

<b>Industrial Computer</b>	CPU	Dual-core 1.6GHz
	Memory	2GB
	Display resolution	17 inches, 1280×1024
	Operation system	Windows XP
	Storage	16GB SSD
	USB port	3×USB2.0
	Serial port	2×RS232
	VGA port	1280×1024@60HZ
	Power supply	10~30V DC or 220V AC
	Average power consumption	<30W
	Working temperature	-20℃~50℃
	Weight	9.5kg
	Dimension	480×360×110mm
<b>Sounding Features</b>	Working frequency	200KHz
	Maximum transmitted power	500W
	Sounding range	0.15m~350m
	Sounding accuracy	±10mm+0.1%h at 1cm resolution
	Draft adjusting range	0.0m~15m
	Sound velocity adjusting range	1370~1700m/s, 1m/s resolution
<b>GPS Module (Optional)</b>	Maximum sampling rate	30Hz
	Channel	14
	Signal	GPS + Beacon
	Accuracy	0.5m(1δ, Beacon)

Descriptions and specifications are subject to change without notice

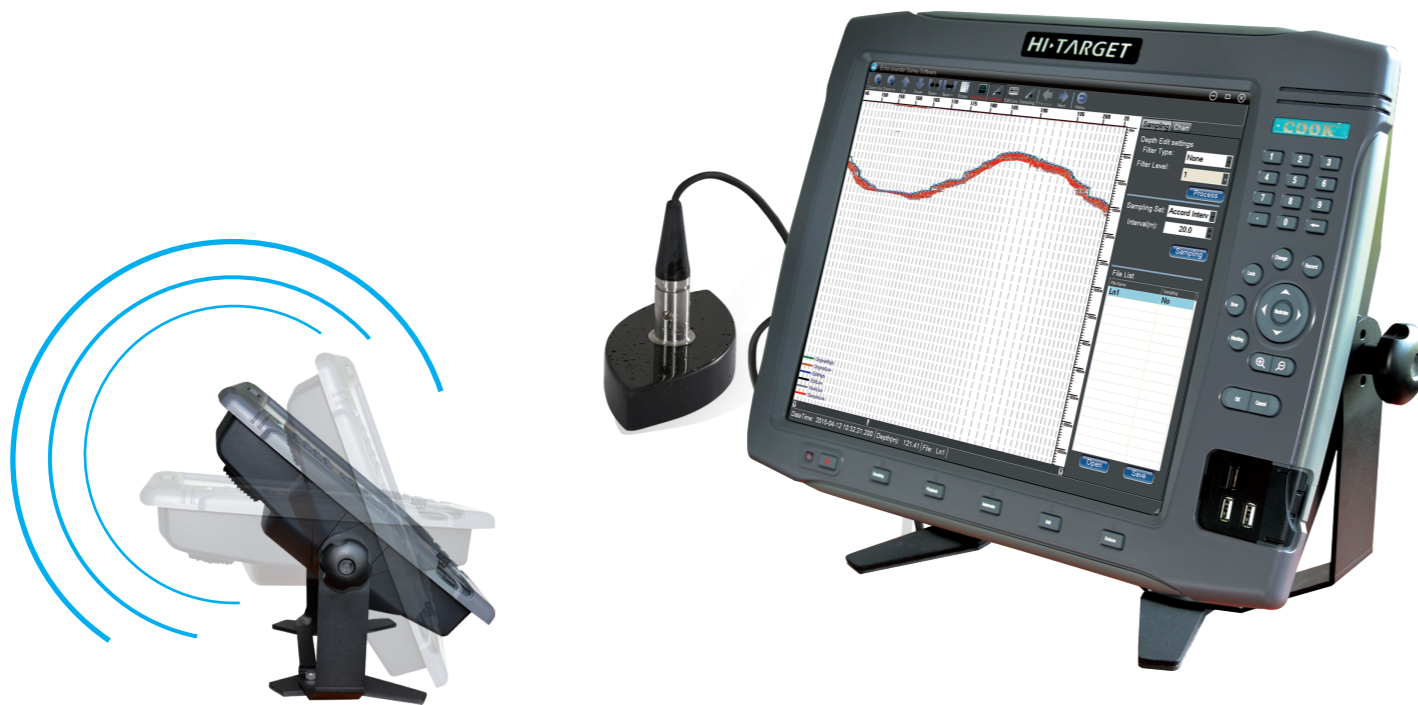
# HD-MAX

## Echo Sounder



# HD-MAX Echo Sounder

**HD-MAX is a full-digit echo sounder for precision measurement in hydrology, reconnaissance, fairway, wharf dredge and so on. Featuring a 17" large-size screen, industrial computer platform, and preinstalled marine surveying software, HD-MAX is designed for efficient, high-speed sounding performance, and provides an excellent solution for marine surveying and mapping.**



## Hi-Max Sounder Powerful and Robust Marine Surveying Software

### Data Compatibility and Security

- Supports NMEA-0183 data
- Supports multi sensor data input, such as attitude indicator, sound velocimeter and electric gyrocompass
- Supports transmitting water depth data to 3rd-party software such as HyPack
- Encrypts original echo data to prevent malicious tampering

### Powerful Edit Function

- Supports manual operation and software calculations to modify GPS delay
- Users can manually input, output or edit plan line and mark (point, line and surface)
- Supports import and export of DXF format plan line and background image

### Friendly Post-processing Function

- Corrects false echo signal by comparing echo graph with data curve of water depth
- Manually add depth sampling point to meet the demands of special feature point extraction
- Supports single tidal station, dual tidal station and triple tidal station corrections



### Friendly Design

- Multiple shortcut buttons ensure convenient field operation
- Supports multi-screen display with VGA
- Adjustable screen display angle

### Optimized Sounding Technology

- Advanced signal tracking gate technology
- Sampling rate up to 30Hz
- Optimized TVG curve delivers improved sounding performance
- Upgrading data processing framework to adapts to a more complex terrain environment
- Easy to record and replay analog signals and water depth information

### Compatibility and Development

- Supports other devices such as GNSS receivers, attitude indicators, sound velocimeters and electric gyrocompasses and so on
- Optional built-in beacon module with precision up to 0.5 meters

### Industrial Computer Platform

- 17" large-size screen
- 16GB SSD
- One-key reset function
- Waterproof, rugged and durable with high strength polyethylene plastic shell